

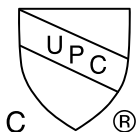
MODEL K100



- The K100 Adjust-a-Sink System elevates the shampoo bowl a total of 12” vertically.
- Height distance from the floor to the neck opening of the bowl ranges from 31” to 43” OR 29” to 41” (set at installation)
- The basic dimensions of a unit in the “down” position are: 22” Wide, 27” Deep and 36” High (to the top of the backsplash)
- A self-contained, maintenance-free foot operated hydraulic pump provides the lift capacity needed to raise the shampoo bowl. The hydraulic pump’s foot pedal is free to rotate approximately 90 degrees to the side anytime the operator requires.
- Components are manufactured from stainless steel, aluminum, and coated steel. The design has proven to provide years of trouble-free service when properly cleaned and maintained.

LEAD TIME: about 3 weeks for standard colors - 4 weeks for special color laminate and bowls.

PAYMENT METHODS: Credit card, or check in advance.



cUPC Listed
File #5496

Model K100 Standard Configurations:

- Comfort Fit #3050 Solid Surface Shampoo Bowl in Black, White or Almond
 - Complete with 550 Faucet, 1729 Vacuum Breaker, and Spray Hose
- Basket Strainer for Shampoo Bowl (Supplied by Accessible Systems, Inc)
- Durable Painted Steel Drain Shroud in Black, White or Almond
- Hot & Cold Water Supply Lines (1/2: FIP to 3/8 comp)
 - PLEASE NOTE we do not supply the hot and cold shut off valves
- Patent Pending Rigid Telescoping Plumbing
 - PLEASE NOTE we do not supply the 1 1/2" "P" trap
- Easy-to-Use Hydraulic Pump - made in the USA - 5 Year Warranty
- 2 year warranty on all other parts and workmanship
- Backboard & backsplash of Wilsonart laminate which is available in 3 standard colors:
 - Black, Frosty White or Almond

Photos and Colors for K100 Standard Configurations with CF #3050 Bowl

			
<p>K100-BK standard BLACK</p> <ul style="list-style-type: none"> - BLACK Comfort Fit #3050 - Wilsonart 595-60 Black - BLACK Painted Shroud 	<p>K100-WT standard WHITE</p> <ul style="list-style-type: none"> - WHITE Comfort Fit #3050 - Wilsonart 1573-60 Frosty White -WHITE Painted Shroud 	<p>K100-AL standard ALMOND</p> <ul style="list-style-type: none"> - ALMOND Comfort Fit #3050 - Wilsonart D30-60 Natural Almond -ALMOND Painted Shroud 	<p>K100-BK with SSS Up-Grade</p> <ul style="list-style-type: none"> - BLACK Comfort Fit #3050 - Wilsonart 1573-60 White -STAINLESS STEEL Shroud

Fixture Choices for Model K100

	
<p>550 Fixture Set comes STANDARD</p> <p>Includes ASSE 1001 Vacuum Breaker and Spray Hose</p>	<p>UP-GRADE to #800 3 in 1 Fixture</p> <p>Includes ASME A112.18.1 Backflow Preventer</p>

ORDER CHECKLIST FOR K100 MODEL ONLY

<input type="checkbox"/> Comfort Fit #3050 <input type="checkbox"/> Marble Products 3000W	Bowl Selection - K100 comes standard with a Comfort Fit #3050 Solid Surface bowl. May substitute for a Marble Products 3000W Cultured Marble Bowl (by request) at no charge.
<input type="checkbox"/> Black <input type="checkbox"/> White <input type="checkbox"/> Almond <input type="checkbox"/> Other: _____	Bowl Color - Standard black, white and almond ship the quickest. See next page for other bowl color choices.
<input type="checkbox"/> 550 Faucet / 1729 VB <input type="checkbox"/> 800 3 in 1	Fixture Choice - 550 Fixture Set (single lever valve with whiz sprayer on the opposite corner) comes standard. Optional up-grade to 800 Fixture (3 in 1 design with pull out spray head)
<input type="checkbox"/> Black <input type="checkbox"/> White <input type="checkbox"/> Almond <input type="checkbox"/> Custom (mfr/color): _____	Laminate Color Choice - Stock laminate colors included in base price are: Black (Wilsonart 1595-60), White (Wilsonart 1573-60), and Almond (Wilsonart D30-60). If requesting a special laminate please provide the manufacturer's name and color code number. There will be a modest up-charge for custom color choices - please call for a quote.
<input type="checkbox"/> Horizontal <input type="checkbox"/> Vertical	Grain Orientation for Custom Laminates - For Custom Laminate choices please indicate the orientation of the grain (if applicable).
<input type="checkbox"/> Black <input type="checkbox"/> White <input type="checkbox"/> Almond <input type="checkbox"/> Stainless Steel	Shroud Color - Black, white and almond are included in the base price. Optional upgrade to a Stainless Steel shroud is available for an up charge.
QTY _____	Number of units being ordered.
<input type="checkbox"/> 1701 Poly Hair Trap <input type="checkbox"/> 8750 Cast Iron Hair Trap <input type="checkbox"/> 750 Chrome Hair Trap	Optional Hair Interceptor - Do you need a hair trap? We offer three (3) choices of optional hair interceptors/traps.
<input type="checkbox"/> 1070 Mixing Valve	Optional Anti-Scald Mixing Valve - Are you required to have an anti-scald mixing valve? We offer a kit with ASSE 1070 valve that can be installed on the mounting panel.

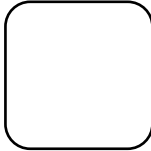
Ship to Contact:
(name, number) _____

Project Name _____
and Location: _____

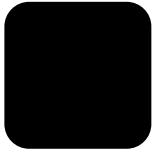
Ship to Address: _____

K100 BOWL COLOR OPTIONS

Comfort Fit #3050 Bowl Color Options



White



Black



Almond



Red



Bone

Marble Products 3000W Bowl Solid Color Options



140 Flame Red



301 Nutmeg



305 White



306 Black



309 Charcoal



311 Sand



314 Ginger



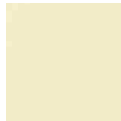
318 Mist Grey



319 Spanish Red

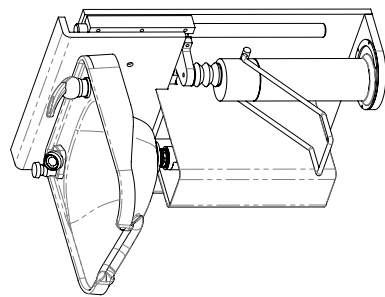
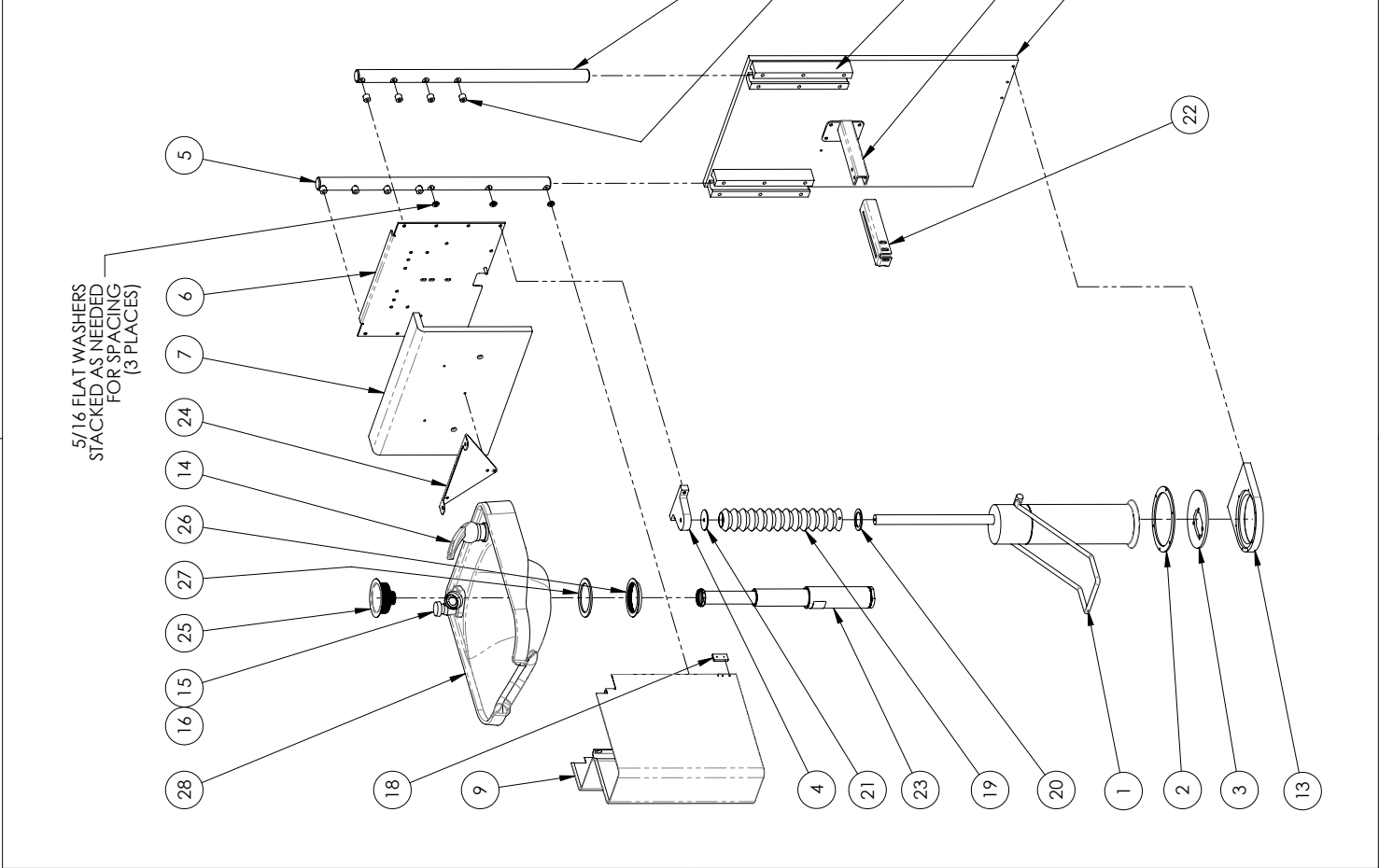


322 Pearl



332 Almond

ITEM	QTY	FILE NUMBER	VENDOR	VENDOR P/N	TITLE
1	1	-34			LIFT PUMP
2	1	K100-37			RETAINER
3	1	K100-38			BASE PLATE
4	1	K100-60			LIFT BRACKET
5	1	K100-61			LIFT SHAFT - LEFT
6	1	K100-63			LIFT PANEL
7	1	K100-64			LIFT BACKSPASH
8	8	K100-65			PANEL STANDOFF
9	1	K100-68			SHROUD
10	4	K100-70			LIFT GUIDE
11	1	K100-71			LIFT SHAFT - RIGHT
12	1	K100-72			DRAIN SUPPORT PIPE
13	1	K100-74			FLOOR PLATE
14	1	K100-83-1			FAUCET
15	1	K100-83-2			VACUUM BREAKER
16	1	K100-83-5			SPRAY HOSE
17	1	K100-85			MOUNTING PANEL
18	1	K100-89			SHROUD GUIDE
19	1	K100-90			BELLOWS (MOD)
20	1	K100-91			LOWER BELLOWS CLAMP RING
21	1	K100-92			UPPER BELLOWS CLAMP RING
22	1	K100-95			DRAIN PIPE CLAMP
23	1	T1512			TELESCOPING DRAIN - MODEL T1512
24	1	40540			SINK BRACKET
25	1	20260			SINK BASKET STRAINER
26	1	BASKET STRAINER NUT			BASKET STRAINER NUT (REF)
27	1	BASKET STRAINER GASKET			BASKET STRAINER GASKET (REF)
28	1	MODEL 3050			SHAMPOO SINK - MODEL 3050



KEY ASST

<p>UNITS INCHES MILLIMETERS</p> <p>1/16 ± .001 1/8 ± .001 3/16 ± .001 1/4 ± .001 3/8 ± .001 1/2 ± .001 3/4 ± .001 1 ± .001 1 1/2 ± .001 2 ± .001 3 ± .001 4 ± .001 5 ± .001 6 ± .001 8 ± .001 10 ± .001 12 ± .001 15 ± .001 20 ± .001 25 ± .001 30 ± .001 40 ± .001 50 ± .001 60 ± .001 75 ± .001 100 ± .001</p>	<p>DATE 10/15/07</p> <p>DATE</p> <p>DATE</p> <p>DATE</p>	<p>DATE 10/15/07</p> <p>DATE</p> <p>DATE</p> <p>DATE</p>	<p>DATE 10/15/07</p> <p>DATE</p> <p>DATE</p> <p>DATE</p>
<p>DESIGNED BY C. SCHEFF</p> <p>CHECKED BY</p> <p>CUSTOMER APPROVAL</p>	<p>DATE 10/15/07</p> <p>DATE</p> <p>DATE</p> <p>DATE</p>	<p>DATE 10/15/07</p> <p>DATE</p> <p>DATE</p> <p>DATE</p>	<p>DATE 10/15/07</p> <p>DATE</p> <p>DATE</p> <p>DATE</p>
<p>ANGLES ± 0.5°</p> <p>MATERIAL</p> <p>FINISH</p>	<p>DATE 10/15/07</p> <p>DATE</p> <p>DATE</p> <p>DATE</p>	<p>DATE 10/15/07</p> <p>DATE</p> <p>DATE</p> <p>DATE</p>	<p>DATE 10/15/07</p> <p>DATE</p> <p>DATE</p> <p>DATE</p>

<p>DATE 10/15/07</p> <p>DATE</p> <p>DATE</p> <p>DATE</p>	<p>DATE 10/15/07</p> <p>DATE</p> <p>DATE</p> <p>DATE</p>	<p>DATE 10/15/07</p> <p>DATE</p> <p>DATE</p> <p>DATE</p>	<p>DATE 10/15/07</p> <p>DATE</p> <p>DATE</p> <p>DATE</p>
<p>DESIGNED BY C. SCHEFF</p> <p>CHECKED BY</p> <p>CUSTOMER APPROVAL</p>	<p>DATE 10/15/07</p> <p>DATE</p> <p>DATE</p> <p>DATE</p>	<p>DATE 10/15/07</p> <p>DATE</p> <p>DATE</p> <p>DATE</p>	<p>DATE 10/15/07</p> <p>DATE</p> <p>DATE</p> <p>DATE</p>
<p>ANGLES ± 0.5°</p> <p>MATERIAL</p> <p>FINISH</p>	<p>DATE 10/15/07</p> <p>DATE</p> <p>DATE</p> <p>DATE</p>	<p>DATE 10/15/07</p> <p>DATE</p> <p>DATE</p> <p>DATE</p>	<p>DATE 10/15/07</p> <p>DATE</p> <p>DATE</p> <p>DATE</p>

ACCESSIBLE SYSTEMS, INC.
9917 13TH AVENUE NORTH - MPLS, MN 55441 PHONE: 612.238.4600

MULTI-STAGE SYSTEM

PROPRIETARY AND CONFIDENTIAL
The information contained in this drawing is the property of Accessible Systems, Inc. Any reproduction in whole or in part without written permission is strictly prohibited.

DRAWING NO. K100

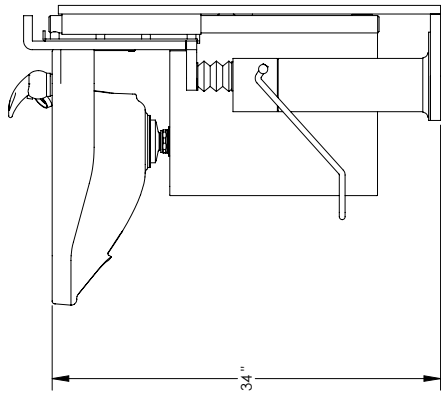
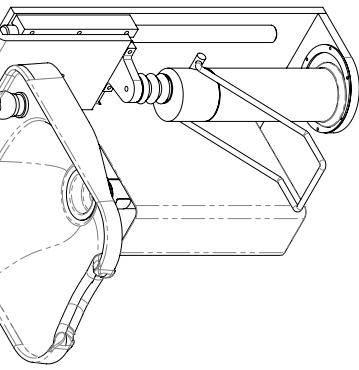
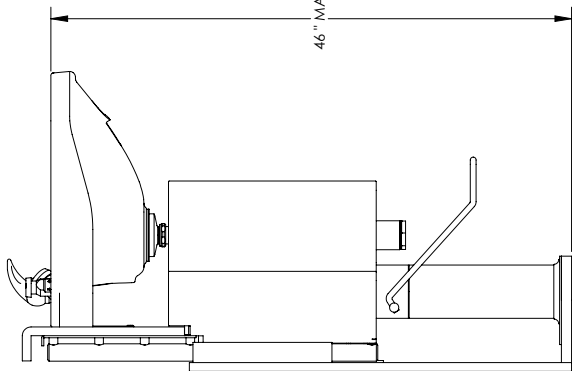
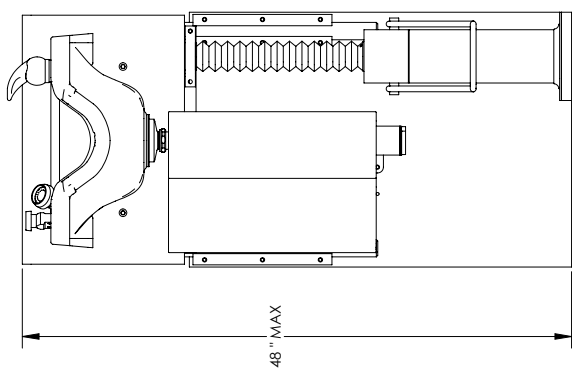
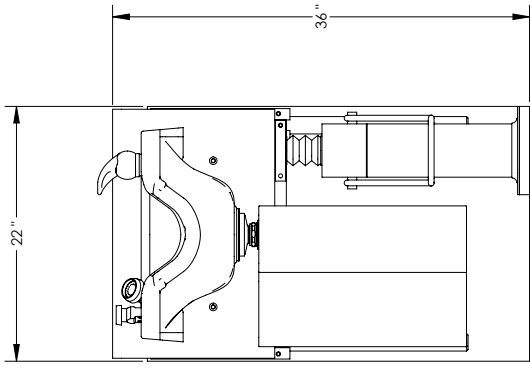
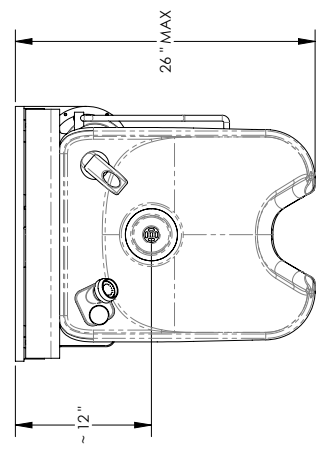
DO NOT SCALE DRAWING WWW.ADJUSTASINK.COM 1 OF 3

D

C

B

A



DESIGNER C. SCHEFF	DATE 10/15/07	ACCESSIBLE SYSTEMS, INC. 9917 13TH AVENUE NORTH - MPLS, MN 55441 PHONE: 612.238.4600	
CHECKER	DATE	MULTI-STAGE SYSTEM	
CUSTOMER APPROVAL	DATE	PROPRIETARY AND CONFIDENTIAL The information contained in this drawing is the property of Accessible Systems, Inc. Any reproduction in whole or in part without written permission is strictly prohibited.	
TOLERANCES EXCEPT AS NOTED DIM INCHES .0 ± .1 .00 ± .01 .000 ± .005		SIZE B DRAWING NO. K100	
ANGLES ± 0.5° MATERIAL FINISH		DO NOT SCALE DRAWING WWW.ADJUSTASINK.COM 2 OF 3	
NEXT ASST THIRD ANGLE PROJECTION			

1

2

3

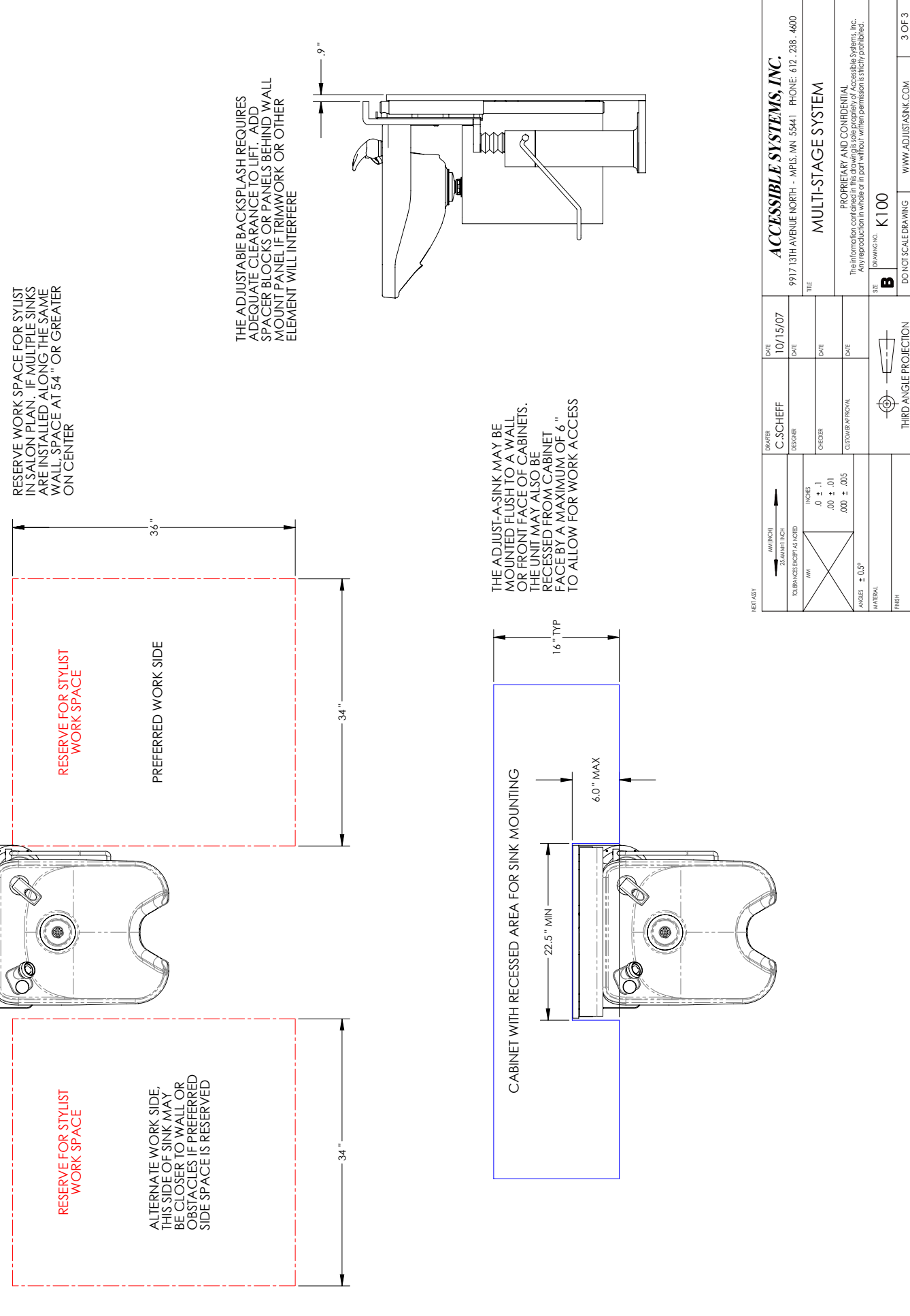
4

1

2

3

4



RESERVE WORK SPACE FOR SYLIST IN SALON PLAN. IF MULTIPLE SINKS ARE INSTALLED ALONG THE SAME WALL, SPACE AT 54" OR GREATER ON CENTER

RESERVE FOR SYLIST WORK SPACE

PREFERRED WORK SIDE

RESERVE FOR SYLIST WORK SPACE

ALTERNATE WORK SIDE. THIS SIDE OF SINK MAY BE CLOSER TO WALL OR OBSTACLES IF PREFERRED SIDE SPACE IS RESERVED

THE ADJUSTABLE BACKPLASH REQUIRES ADEQUATE CLEARANCE TO LIFT. ADD SPACER BLOCKS OR PANELS BEHIND WALL MOUNT PANEL IF TRIMWORK OR OTHER ELEMENT WILL INTERFERE

THE ADJUST-A-SINK MAY BE MOUNTED FLUSH TO A WALL OR FRONT FACE OF CABINETS. THE UNIT MAY ALSO BE RECESSED FROM CABINET FACE BY A MAXIMUM OF 6" TO ALLOW FOR WORK ACCESS

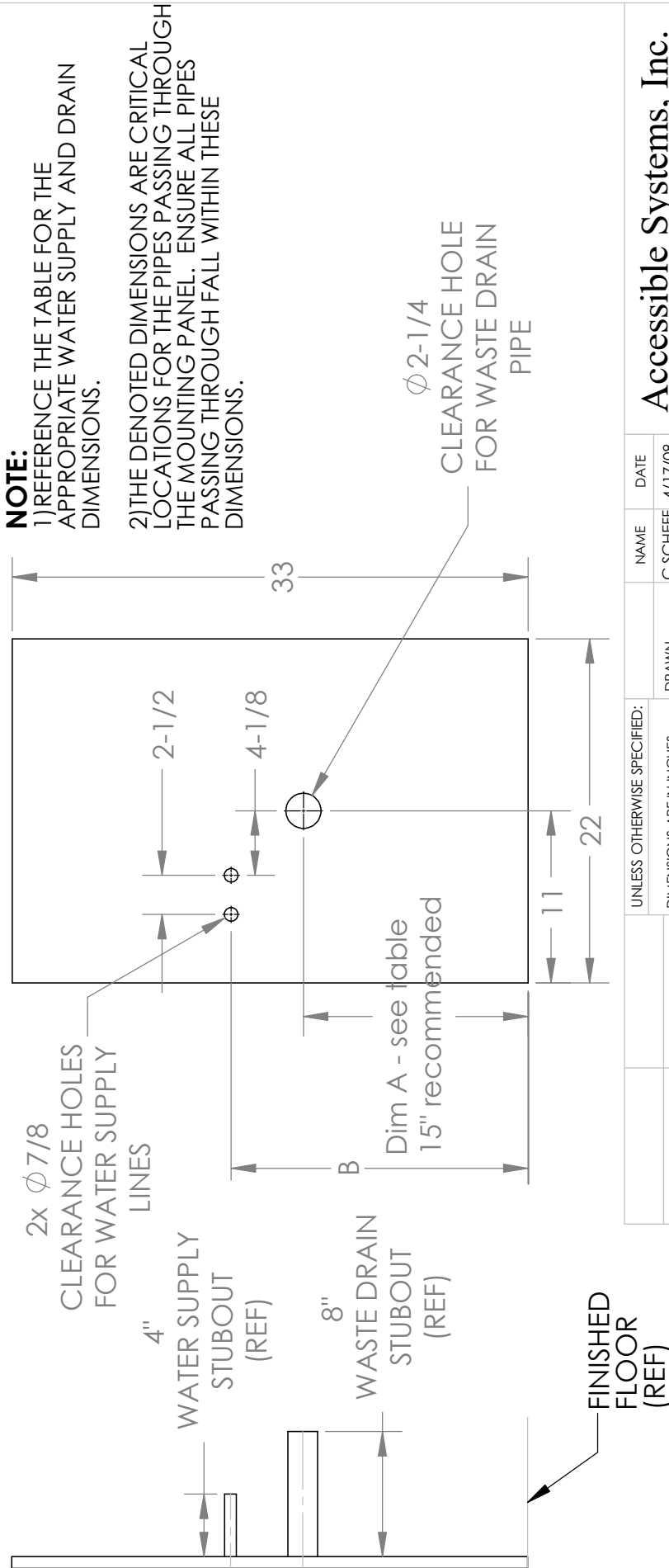
CABINET WITH RECESSED AREA FOR SINK MOUNTING

DATE	10/15/07	DATE	10/15/07
DESIGNER	C. SCHEFF	CHECKER	
CUSTOMER APPROVAL		DATE	
TITLE ACCESSIBLE SYSTEMS, INC. 9917 13TH AVENUE NORTH - MPLS, MN 55411 PHONE: 612. 288 - 4600 MULTI-STAGE SYSTEM			
PROPRIETARY AND CONFIDENTIAL The information contained in this drawing is the property of Accessible Systems, Inc. Any reproduction in whole or in part without written permission is strictly prohibited.			
SIZE	B	DRWING NO.	K100
THIRD ANGLE PROJECTION 		DO NOT SCALE DRAWING	WWW.ADJUSTASINK.COM
SHEET LIST 1 2 3 4		1 2 3 4	
TOLERANCES EXCEPT AS NOTED INCHES .0 ± .1 .00 ± .01 .000 ± .005 ANGLES ± 0.5°		MATERIAL FINISH	
3 OF 3			

Waste Drain and Water Supply Configurations			Without Mixing Valve Kit	WITH Mixing Valve Kit
Description	Drain Type	Dimension A Min	Dimension B Max	Dimension B Min
"Rough In" New construction or remodel	Standard with or without Hair Trap	10"	19"	3"

NOTE: FOR USE WITH COMFORT FIT #3050 SHAMPOO BOWL WITH OR WITHOUT HAIR INTERCEPTOR

NOTE: WISCONSIN REQUIRES THE SINK WASTE OUTLET NOT MORE THAN 15" ABOVE TRAP OUTLET, ROUGH IN WASTE AT 19"



NOTE:

- 1) REFERENCE THE TABLE FOR THE APPROPRIATE WATER SUPPLY AND DRAIN DIMENSIONS.
- 2) THE DENOTED DIMENSIONS ARE CRITICAL LOCATIONS FOR THE PIPES PASSING THROUGH THE MOUNTING PANEL. ENSURE ALL PIPES PASSING THROUGH FALL WITHIN THESE DIMENSIONS.

PROPRIETARY AND CONFIDENTIAL
 THE INFORMATION CONTAINED IN THIS DRAWING IS THE SOLE PROPERTY OF ACCESSIBLE SYSTEMS, INC. ANY REPRODUCTION IN PART OR AS A WHOLE WITHOUT THE WRITTEN PERMISSION OF ACCESSIBLE SYSTEMS, INC IS PROHIBITED.

UNLESS OTHERWISE SPECIFIED:		NAME	DATE
DIMENSIONS ARE IN INCHES	DRAWN	C SCHEFF	4/17/08
TOLERANCES:	CHECKED		
FRACTIONAL ± 1/16	ENG APPR.		
ANGULAR: MACH ±	MFG APPR.		
BEND ±	Q.A.		
TWO PLACE DECIMAL ±	COMMENTS:		
THREE PLACE DECIMAL ±			
INTERPRET GEOMETRIC TOLERANCING PER:			
MATERIAL:			
FINISH:			
NEXT ASSY	USED ON		
APPLICATION	DO NOT SCALE DRAWING		

Accessible Systems, Inc.		REV
TITLE: ROUGH-IN FOR K100 3-STAGE PLUMBING		H
SIZE	DWG. NO.	
A	K100-87	
SCALE: 1:8	WEIGHT:	SHEET 1 OF 1